

FAQ • 01/2014

## How do you do mass editing of comments of control modules and blocks with PCS 7 Advanced ES?

SIMATIC PCS 7, Advanced ES

---

This entry is from the Siemens Industry Online Support. The general terms of use ([http://www.siemens.com/terms\\_of\\_use](http://www.siemens.com/terms_of_use)) apply.

## Security information

Siemens provides products and solutions with industrial security functions that support the secure operation of plants, solutions, machines, equipment and/or networks. They are important components in a holistic industrial security concept. With this in mind, Siemens' products and solutions undergo continuous development. Siemens recommends strongly that you regularly check for product updates.

For the secure operation of Siemens products and solutions, it is necessary to take suitable preventive action (cell protection concept, for example) and integrate each component into a holistic, state-of-the-art industrial security concept. Third-party products that may be in use should also be considered. For more information about industrial security, visit <http://www.siemens.com/industrialsecurity>.

To stay informed about product updates as they occur, sign up for a product-specific newsletter. For more information, visit <http://support.automation.siemens.com>.

## Contents

<b>1</b>	<b>Description .....</b>	<b>3</b>
<b>2</b>	<b>Procedure .....</b>	<b>4</b>
2.1	Preparation of the Control Module Types .....	4
2.1.1	Preparing the CMT Control Module Comments .....	4
2.1.2	Preparation of the Block Comment Type .....	7
2.2	Assign Comments in AdvES .....	9
2.2.1	Bulk Engineering of Comments .....	9
2.2.2	Importing Control Module Comments from Excel .....	12
2.2.3	Specifying Single Comments .....	13

# 1 Description

Control module comments and block comments are changed in the projects according to the control modules used.

When using control module types you can use PCS 7 Advanced Engineering (AdvES) to mass specify comments.

## 2 Procedure

### 2.1 Preparation of the Control Module Types

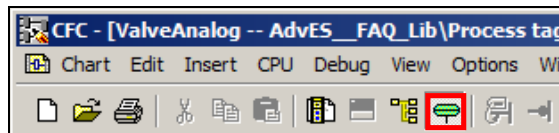
Before opening your SIMATIC PCS 7 project in AdvES, you must prepare the control module types (CMT) in SIMATIC PCS 7.

**WARNING** If you do not follow the instructions given below, AdvES cannot change the comment fields when exporting the data to PCS 7.

#### 2.1.1 Preparing the CMT Control Module Comments

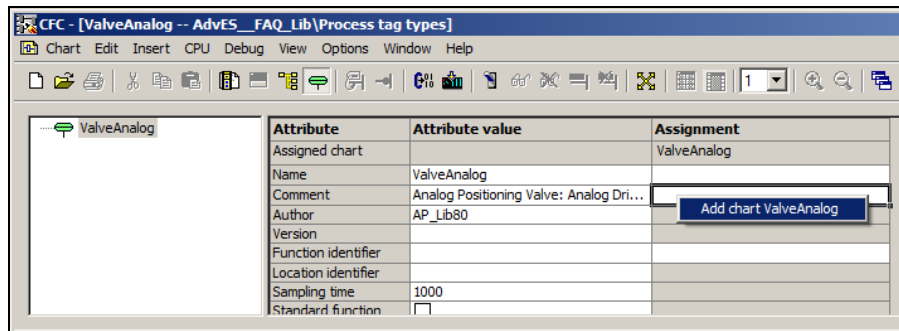
1. Open the "Technological Connections" of the control module type.

Figure 2-1:



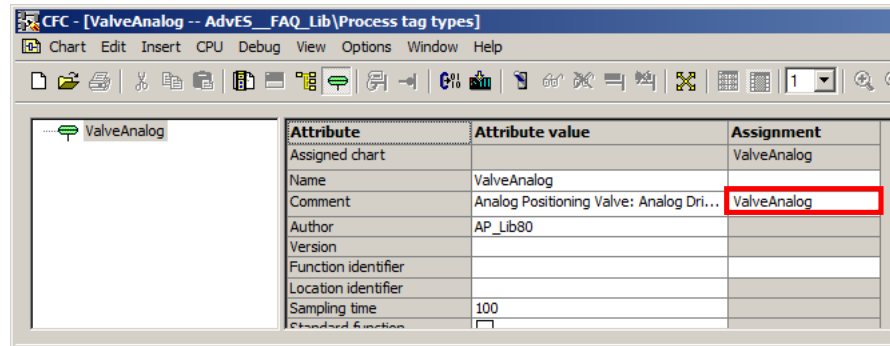
2. Right-click in the field for assigning the comment (column: "Assignment", row: "Comment").  
The "Add chart ..." button opens.

Figure 2-2



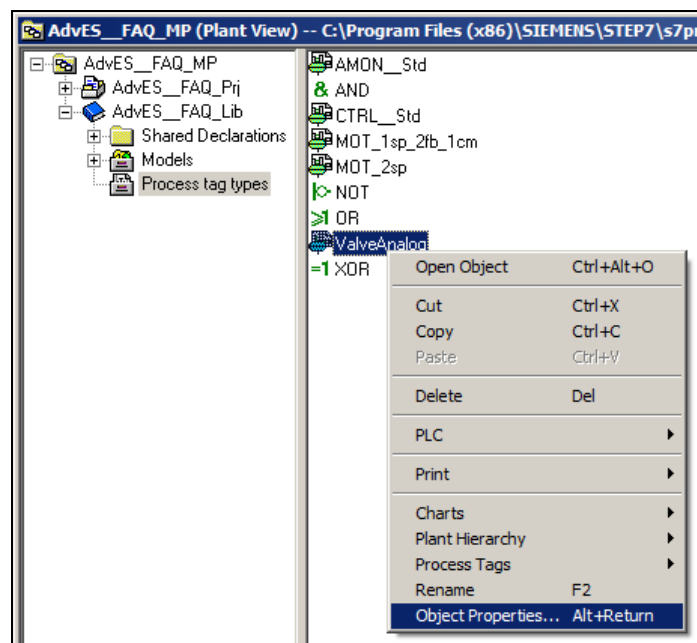
3. Click on the "Add chart ..." button.  
Now you have assigned a chart to the comment.

Figure 2-3



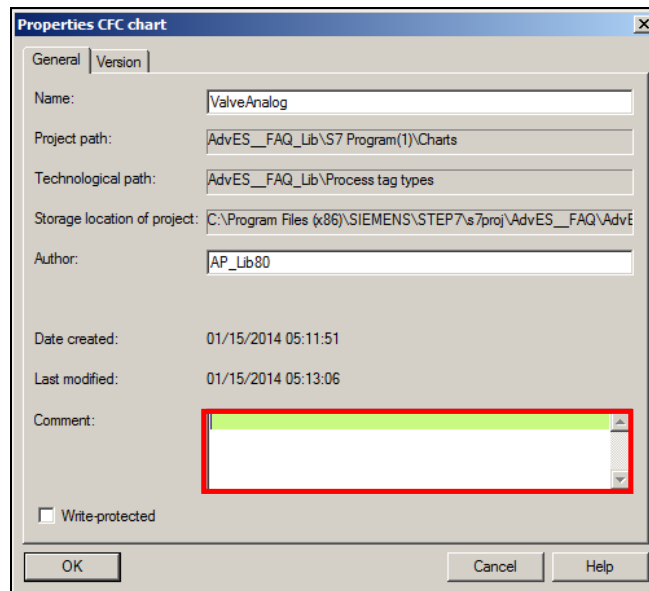
4. Right-click the control module type in the SIMATIC Manager to open the pop-up menu and select the menu command "Object Properties...".

Figure 2-4



The "Properties CFC chart" dialog opens.  
The comment field has a colored background when chart assignment has succeeded.

Figure 2-5

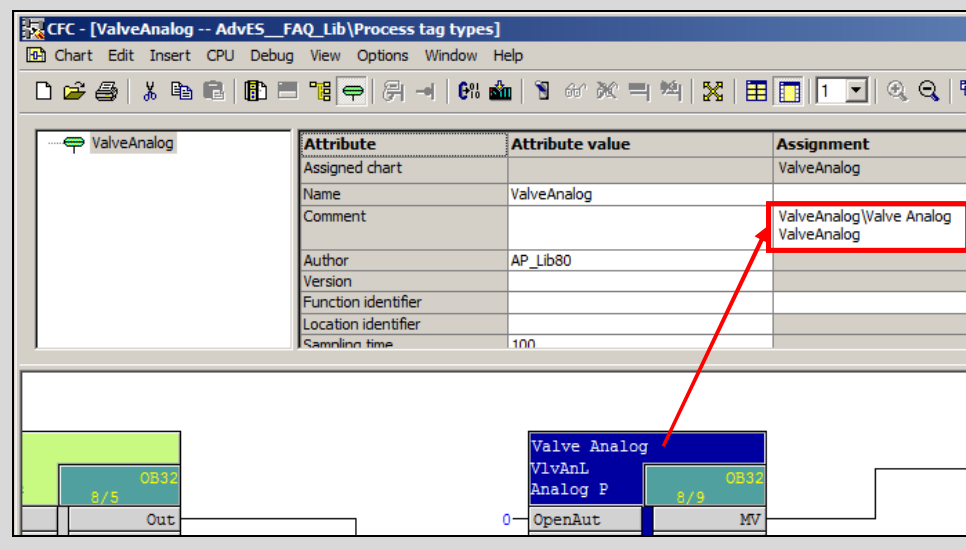
**Note**

The control module comment can only be defined for the control module itself or also passed on to a block.

**Example**

The "ValveAnalog" block is to have the same comment as the complete "ValveAnalog" control module.

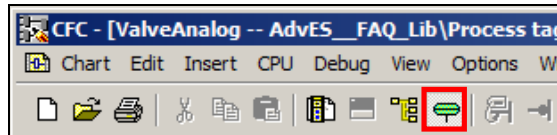
For this you must drag and drop the block in the comment field of the control module type.



### 2.1.2 Preparation of the Block Comment Type

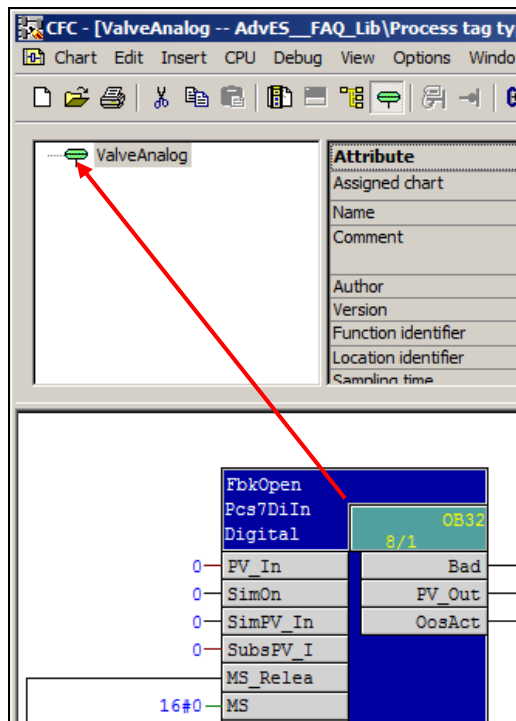
1. Open the "Technological Connections" of the control module type.

Figure 2-6



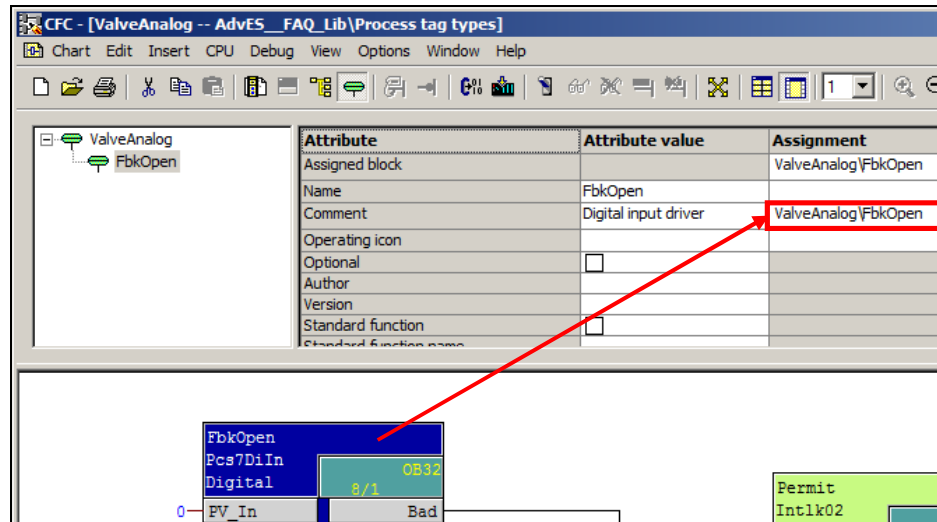
2. Drag and drop the block on the uppermost object in the "Technological Connections".

Figure 2-7



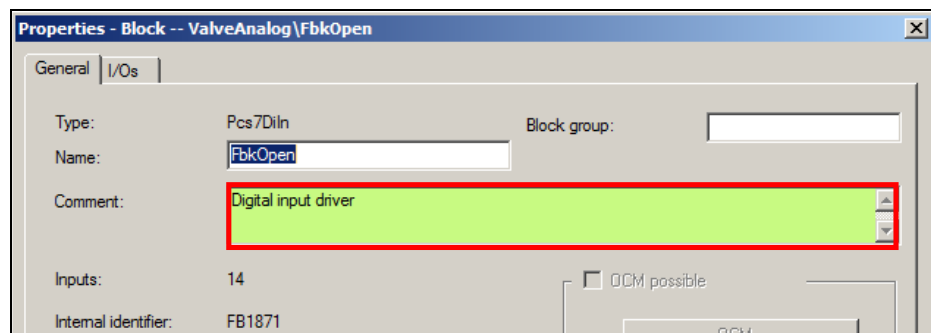
3. Mark the block in the "Technological Connections" and drag and drop it in the field for assigning the comment (column: "Assignment", row: "Comment").

Figure 2-8



4. Double-click the block to open the Properties of the object.  
The comment field has a colored background when block assignment has succeeded.

Figure 2-9





## 2.2 Assign Comments in AdvES

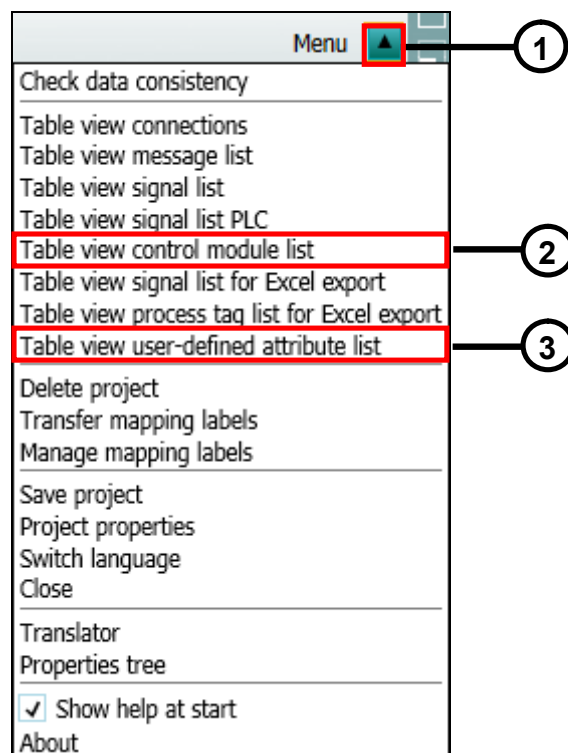
You have three different options for editing the comment field in AdvES:

- Bulk Engineering using table views
- Importing control module comments from Excel files
- Editing single comments through the Object Properties

### 2.2.1 Bulk Engineering of Comments

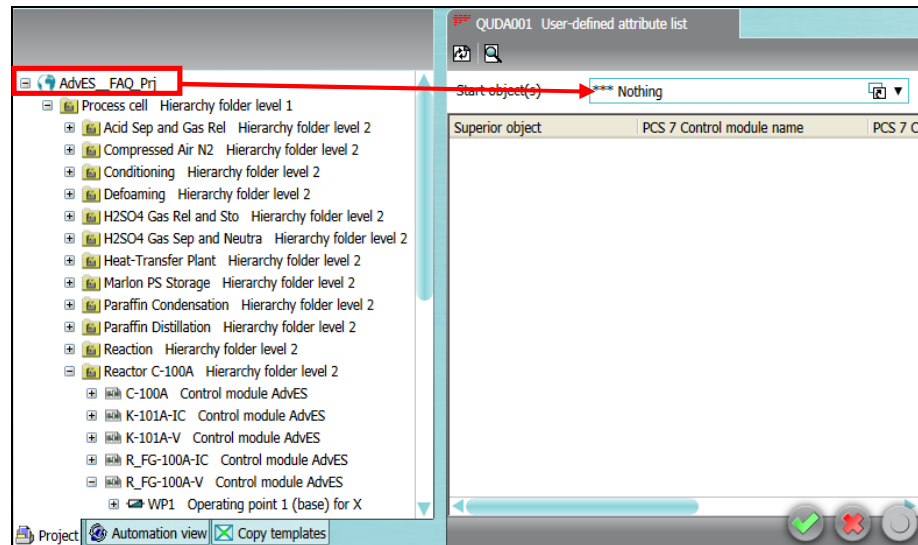
1. Click the button (1) in the header, next to the designation "Menu".  
A drop-down list opens.
  2. For mass editing of control module comments you click the menu command "Table view control module list (2).  
This table view is shown in Figure 2-12.
- For mass editing of block comments you click the menu command "Table view user-defined attribute list (3).  
This table view is shown in Figure 2-13.

Figure 2-10



3. Drag and drop the project node into the "Start object(s)" field.

Figure 2-11



4. You can change the control module comments in the "PCS 7 CM description" column (Figure 2-12).  
You change the block comments in the "PCS 7 Control module description" column (Figure 2-13).  
Then click the "Apply" and "OK" buttons to save the changes and close the table view.

Figure 2-12 – Control module list

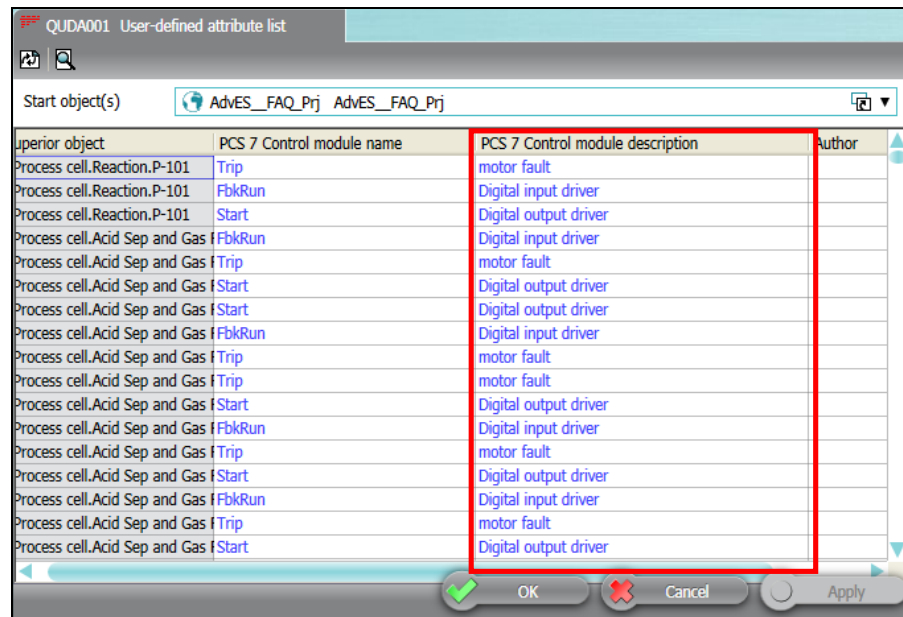
QMST001: Control module list

Start object(s): AdvES\_FAQ\_Prj AdvES\_FAQ\_Prj

Sheet	PCS 7 control module name	PCS 7 CM description	PCS 7 control module type	Intercon
<input type="checkbox"/>	P-109	1 Speed Motor with 2+4 Feedback	MOT_1sp_2fb_1cm	
<input type="checkbox"/>	P-101	1 Speed Motor with 2+4 Feedback	MOT_1sp_2fb_1cm	
<input type="checkbox"/>	UVL-100	Analog Monitoring	AMON_Std	
<input type="checkbox"/>	W-103-Ana	Analog Monitoring	AMON_Std	
<input type="checkbox"/>	W-101	Analog Monitoring	AMON_Std	
<input type="checkbox"/>	P-102R	1 Speed Motor with 2+4 Feedback	MOT_1sp_2fb_1cm	
<input type="checkbox"/>	P-660G	1 Speed Motor with 2+4 Feedback	MOT_1sp_2fb_1cm	
<input type="checkbox"/>	P-108R	1 Speed Motor with 2+4 Feedback	MOT_1sp_2fb_1cm	
<input type="checkbox"/>	P-103A	1 Speed Motor with 2+4 Feedback	MOT_1sp_2fb_1cm	
<input type="checkbox"/>	P-103R	1 Speed Motor with 2+4 Feedback	MOT_1sp_2fb_1cm	
<input type="checkbox"/>	P-108A	1 Speed Motor with 2+4 Feedback	MOT_1sp_2fb_1cm	
<input type="checkbox"/>	P-104A	1 Speed Motor with 2+4 Feedback	MOT_1sp_2fb_1cm	
<input type="checkbox"/>	P-107	1 Speed Motor with 2+4 Feedback	MOT_1sp_2fb_1cm	
<input type="checkbox"/>	P-102A	1 Speed Motor with 2+4 Feedback	MOT_1sp_2fb_1cm	
<input type="checkbox"/>	P-104R	1 Speed Motor with 2+4 Feedback	MOT_1sp_2fb_1cm	
<input type="checkbox"/>	B-101-IC	Controller	CTRL_Std	
<input type="checkbox"/>	O-202	Analog Monitoring	AMON_Std	

Buttons: OK, Cancel, Apply

Figure 2-13 – User-defined attribute list



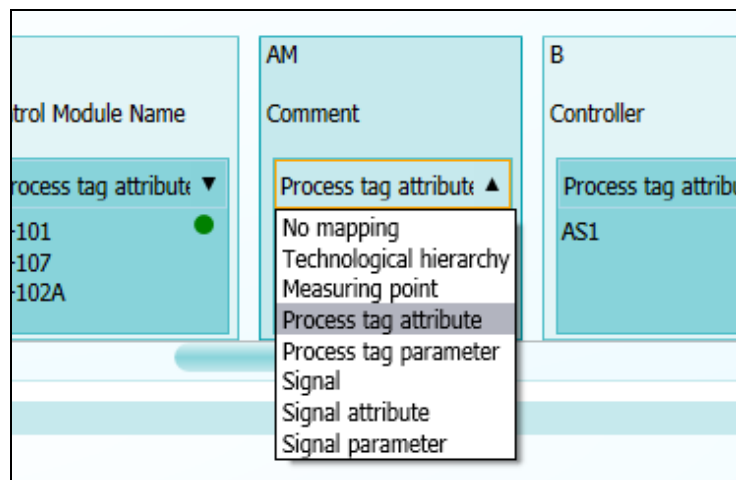
- When you export the data from AdvES to PCS 7, the comments are changed in the PCS 7 project according to your changes.

### 2.2.2 Importing Control Module Comments from Excel

To import comments from Excel lists you must define the following when creating the configurator:

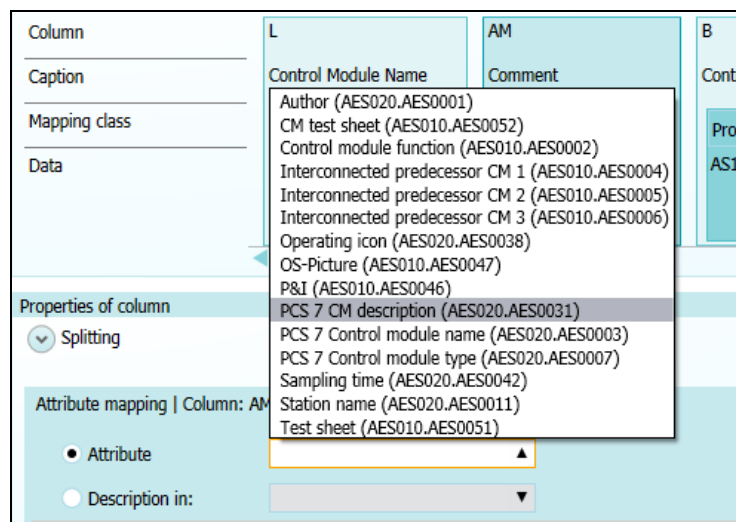
1. In the workflow bar, you click the button marked "Import signal/measuring point list".
2. Select the "Process tag attribute" assignment class for the column object (for the comments to be important).

Figure 2-14



3. In the Properties of the column object you select the "PCS 7 CM description" attribute assignment.

Figure 2-15



4. After importing the Excel data and then exporting it to PCS 7, the comments are changed in the PCS 7 project according to your changes.

### 2.2.3 Specifying Single Comments

1. Double-click the relevant object to open the Properties of the control module (see Figure 2-15 (1)) or the block (see Figure 2-16 (1)) in which you want to change the comment.  
In the figure below we have chosen the "ValveAnalog" control module and the lower-level "ValveAnalog" block.
2. Change the comment accordingly in the Properties dialog (3).

Figure 2-16

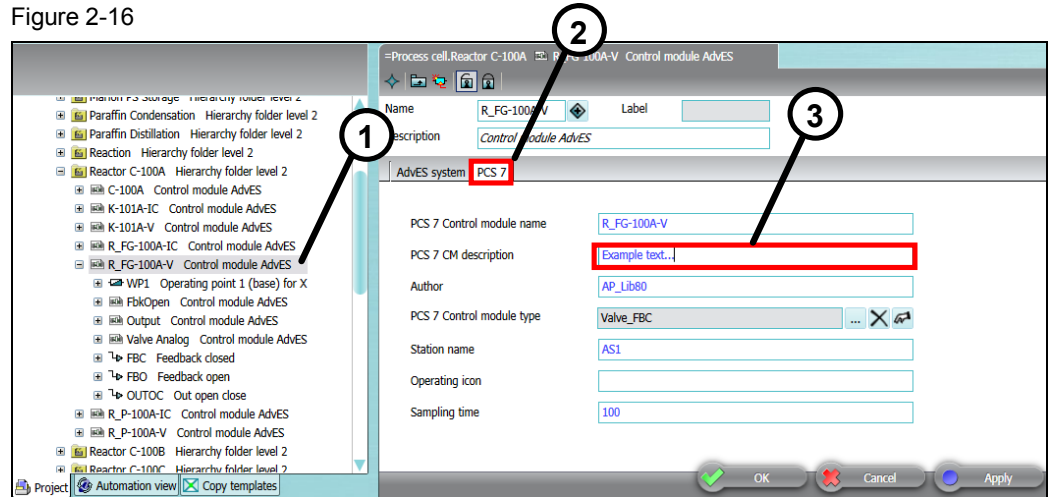
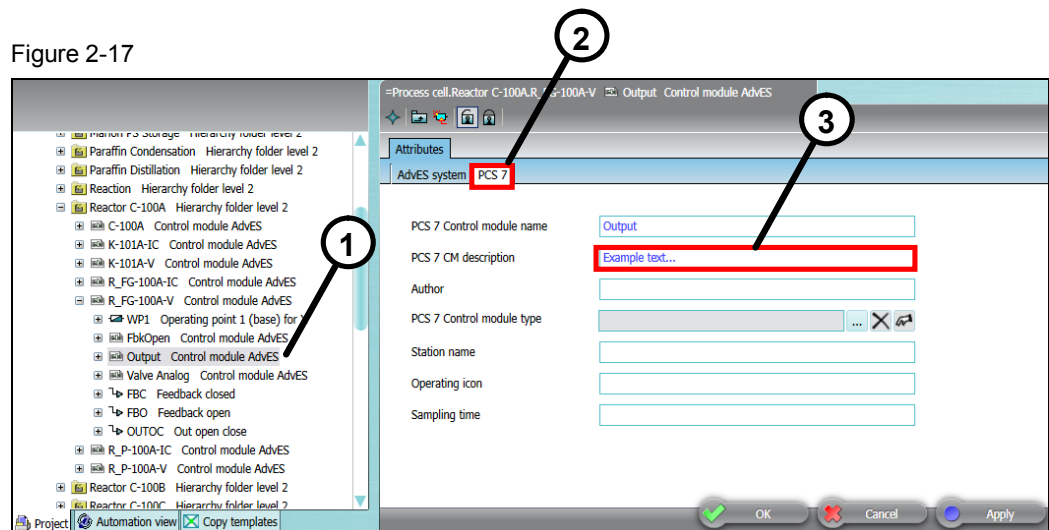


Figure 2-17



3. Click the "Apply" button to save the changes.  
Then click the "OK" button to close the dialog.
4. When you export the data from AdvES to PCS 7, the comments are changed in the PCS 7 project according to your changes.